

ANANGU TJUTA PAWA PAYMILANTJAKU ILARINGANYI

# SOON, ANANGU WILL NEED TO START PAYING FOR ELECTRICITY

Nganana ngaranyi nyuntunya  
alpamilantjaku panya nyuntu nintingku kulintjaku

We are here to help you get ready for this change



YAALTJI-YAALTJINGKULA NGANAMPA WALINGKA PAWA YUUTJUMILALPAI?

# HOW DO WE USE ELECTRICITY IN OUR HOMES?



**Nganana pawa yuutjumilalpai  
nganampa ngurangka:**

- palyanku nyinanytjaku
- pika wiya nyinanytjaku
- atunypa nyinanytjaku
- pukulpa nyinanytjaku

**We use electricity in our  
homes to keep us:**

- Comfortable
- Healthy
- Safe
- Entertained

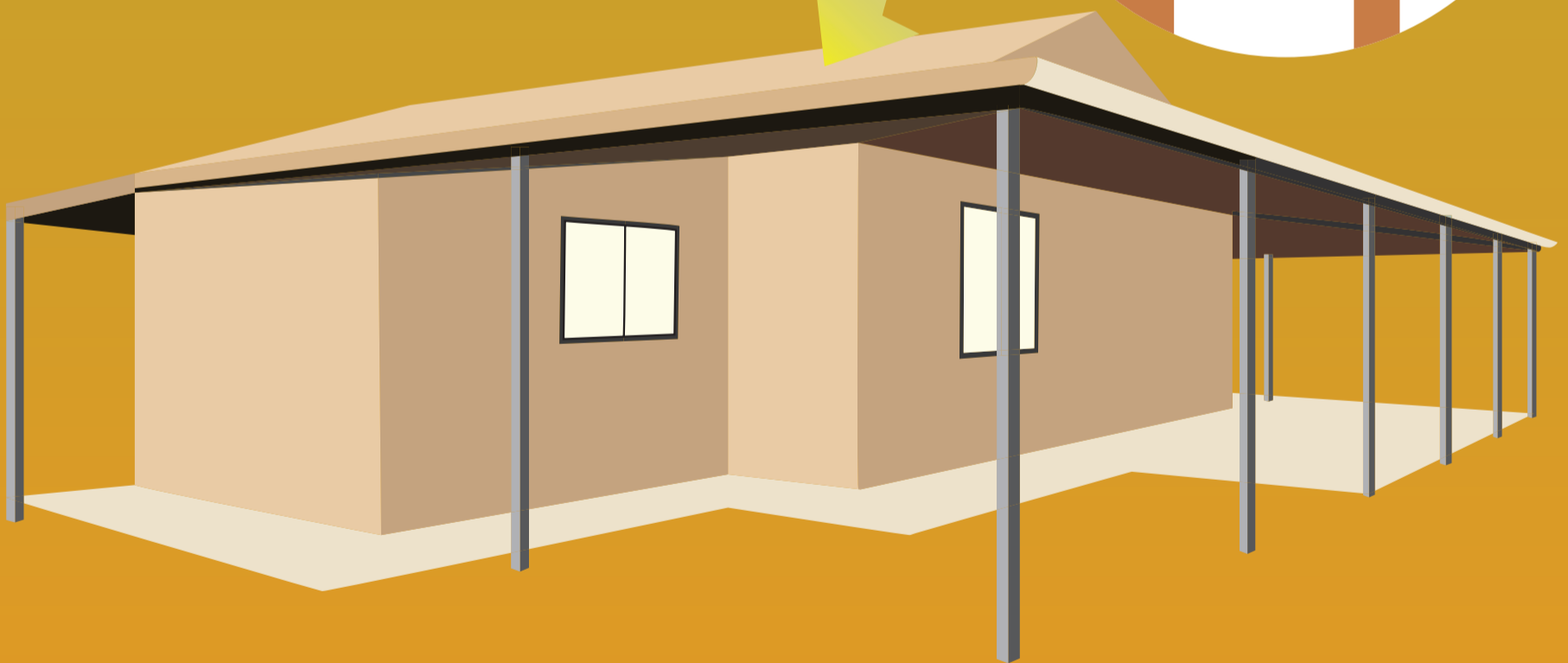
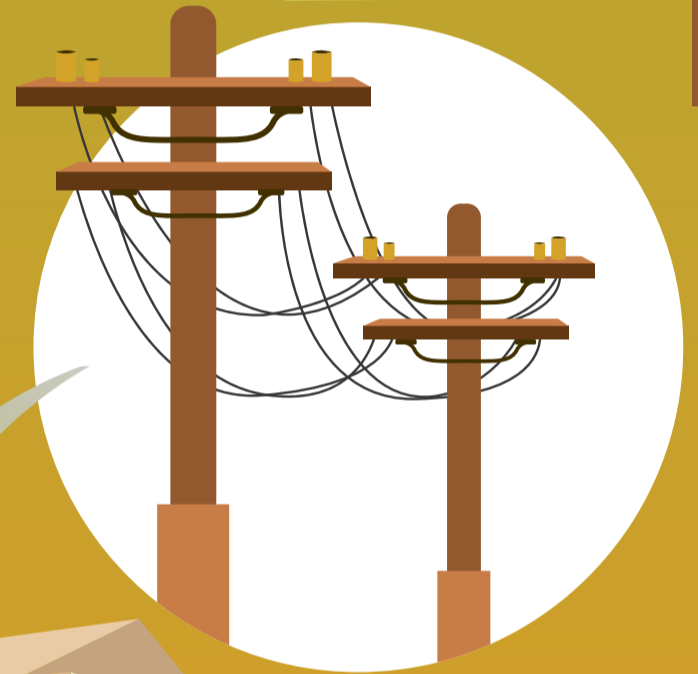
PAWA YAALTJI-YAALTJI PAKALPAI?

# HOW IS ELECTRICITY MADE?



Titjilina tjinaraitangka  
tjutinyangka pawa alaringanyi.

Diesel goes into the generator to make  
electricity.



Palulanguru pawaku waya tjutawanu kiminiti tjutakutu  
ma-wirkananyi munu ananyi wali tjutakutu.

The electricity created goes through the power lines to the communities and into  
the houses.

TITJILINA YAALTJINGURU MANTJINI?

# WHERE DOES DIESEL COME FROM?

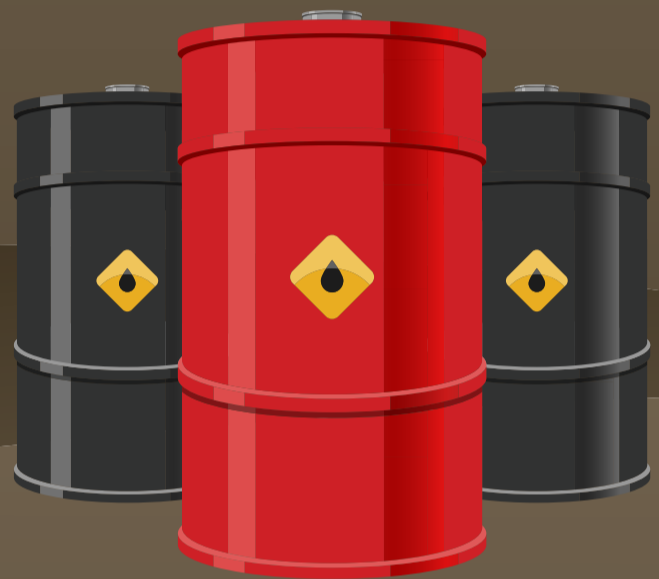
Uwilakuya manta munu  
uru sea unngu  
ngurira wakalpai.

They drill for oil out of the ground  
and sea.



Uwilanguruya  
titjilina palyalpai.

And they make diesel out of oil.



Titjilina taraka pulkangka katira pawa palyalpai.

Transport brings the diesel to the power stations to  
create electricity.



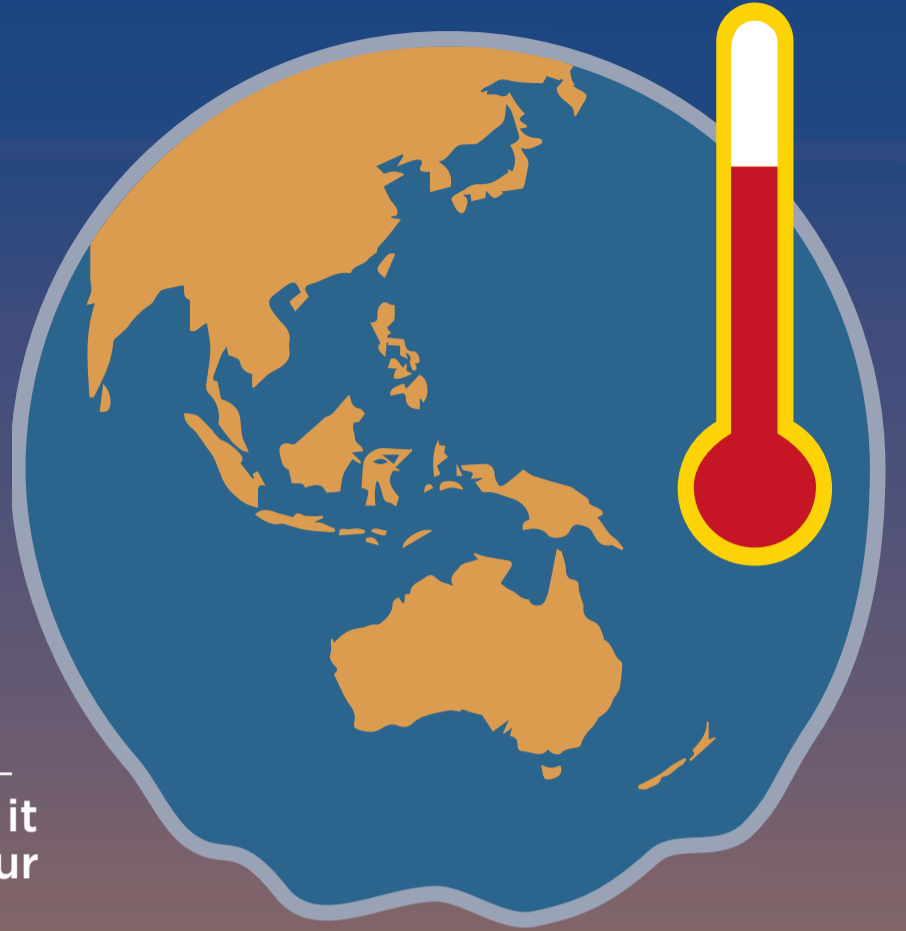
# BURNING DIESEL IS BAD FOR COUNTRY!

**Tjinaraitangu titjilina kampara gas  
pakaltjingalpai.**

The generators burn the diesel which  
releases gas.

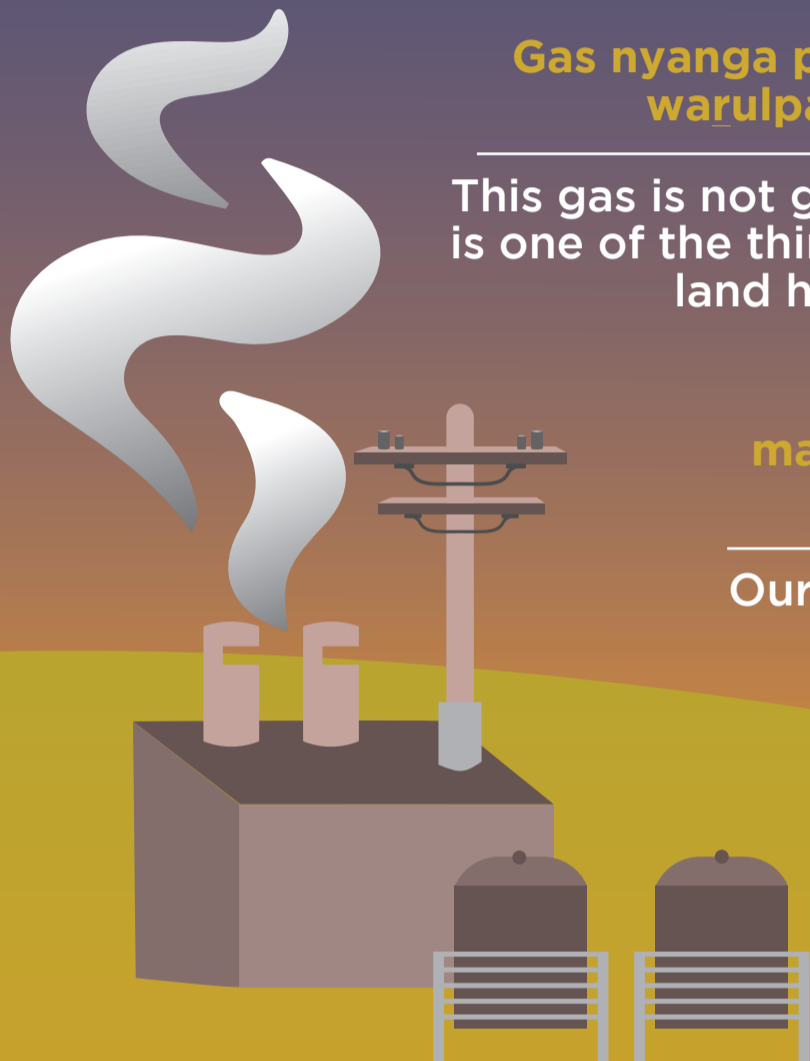
**Gas nyanga paluru manta  
warulpaitjara.**

This gas is not good because it  
is one of the things making our  
land hotter.



**Kuwari ngura nganampa panya  
ma-piltiringu, ka nganampa mai putitja, inunytji  
kulu, ma-wiyaringanyi.**

Our country is becoming dryer and bush food and  
flowers are not so plentiful.

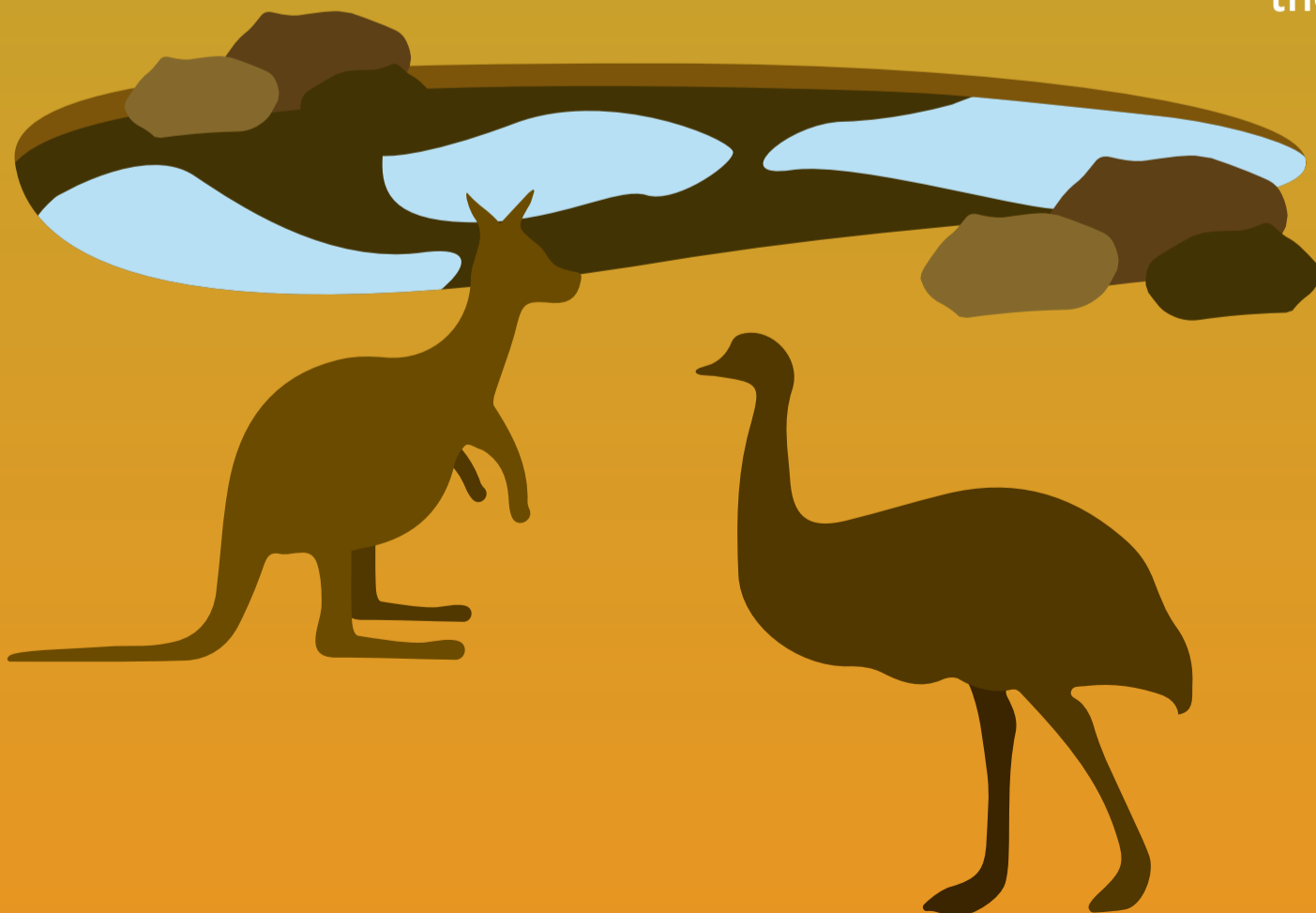


**Iriti panya tjana kapi  
Tjawara tjikilpai karunguru.  
Palu kuwari kapi wiya.**

In the past we could dig for  
water in the creeks, but now  
they are getting drier.

**Uti nganana uwankarangku  
ngura nganampa  
atunymanama.**

We all need to take care of  
Country and use less  
electricity.



Iritiya Anangu tjutangku ngura pulkara atunymankupai.

Uti nganana nganampa ngura atunymanama pawa purkarangku yuutjumilara.

In the past, Anangu took care of their land.

Like generations before us, we should also care for the land by using less power.



ANANGU KUTJUPA TJUTANGKU PAWA PULKA MULAPA WAINARA YUUTJUMILANI

# SOME ANANGU ARE USING A LOT OF ELECTRICITY



Tiliya kalala alara wantinyi.

Lights are on all day.

Apana patintja wiyangku wantinyi wali unytjunarinytjaku.

Ovens being used for heating the house or being left on.



Nganana titutjarangku pawa alara wantinyi TV pulka ala ngarala tjinturinganyi.

TVs are left on all day and all night.

Walpa wari ala wantira tjinturinganyi.

Leaving air conditioning on all night and when no one is home.

Mani pulka alatjitu pawa palyantjaku ka nganana pawa pulka yuutjumilanyangka kutjupara intjina patiringkupai.

Panya tjinaraita intjina pulkara warkarira katakatipai.

Electricity costs a lot of money to make. If we use too much, we can have power outages.

If the generator engine works too hard it breaks down.

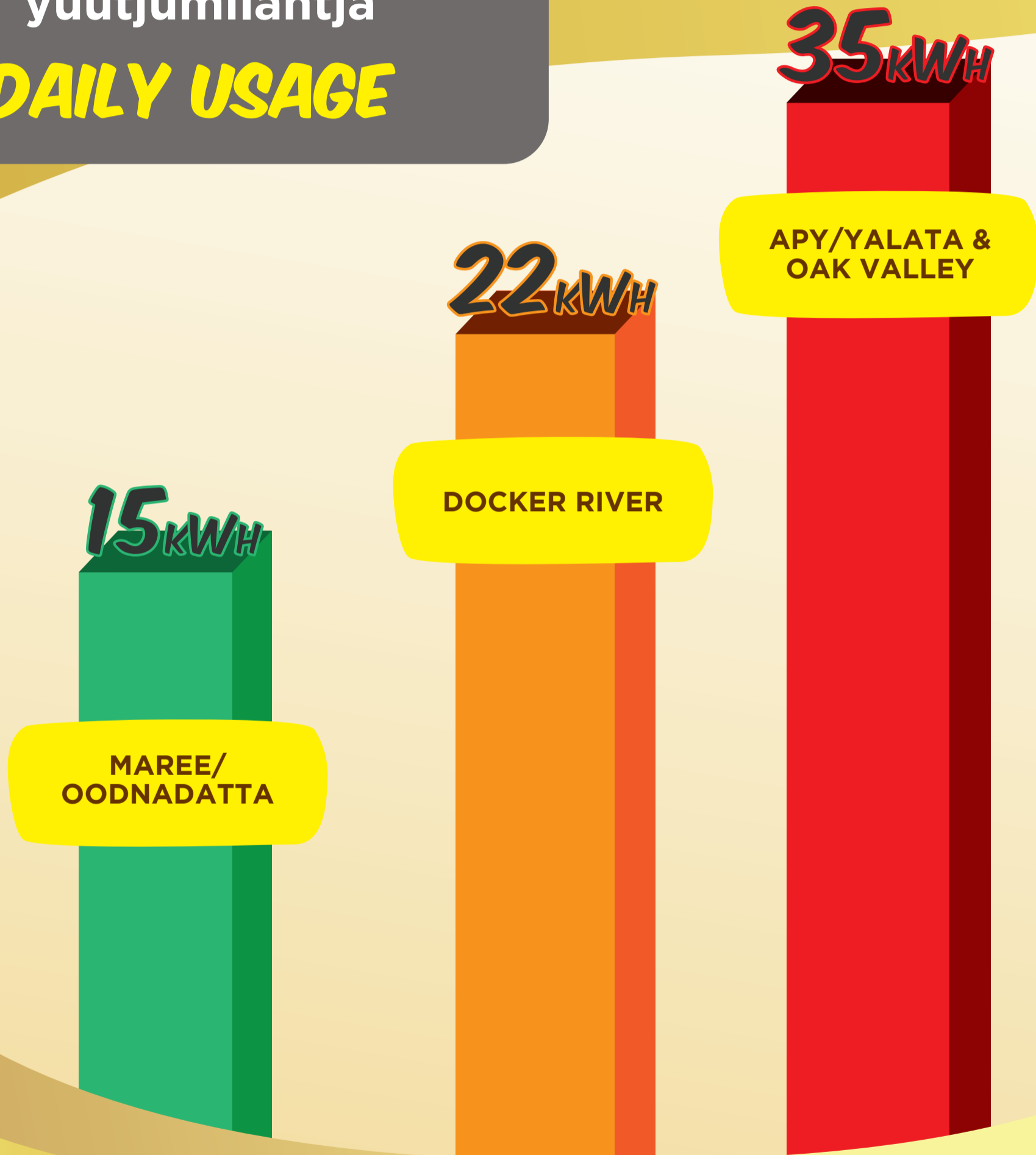


NGURA KUTJUPA TJUTANGKU PAWA YAALTJITU YUUTJUMILANI?

# HOW MUCH ELECTRICITY DO OTHER COMMUNITIES USE?

Tjintu kutju  
yuutjumilantja

**DAILY USAGE**



Anangu tjutangku pawa yuutjumilalpai ngura kutjupa tjutangka waintara.

Anangu are using a lot more power than other communities.

Kamantalu nganampa pawa payamilanigi palu kuwari tjana Anangu tjutangku tjukutjuku payamilantjaku wangkanyi.

The Government pays for the electricity we use. Now they are asking Anangu to pay a bit, like other communities.

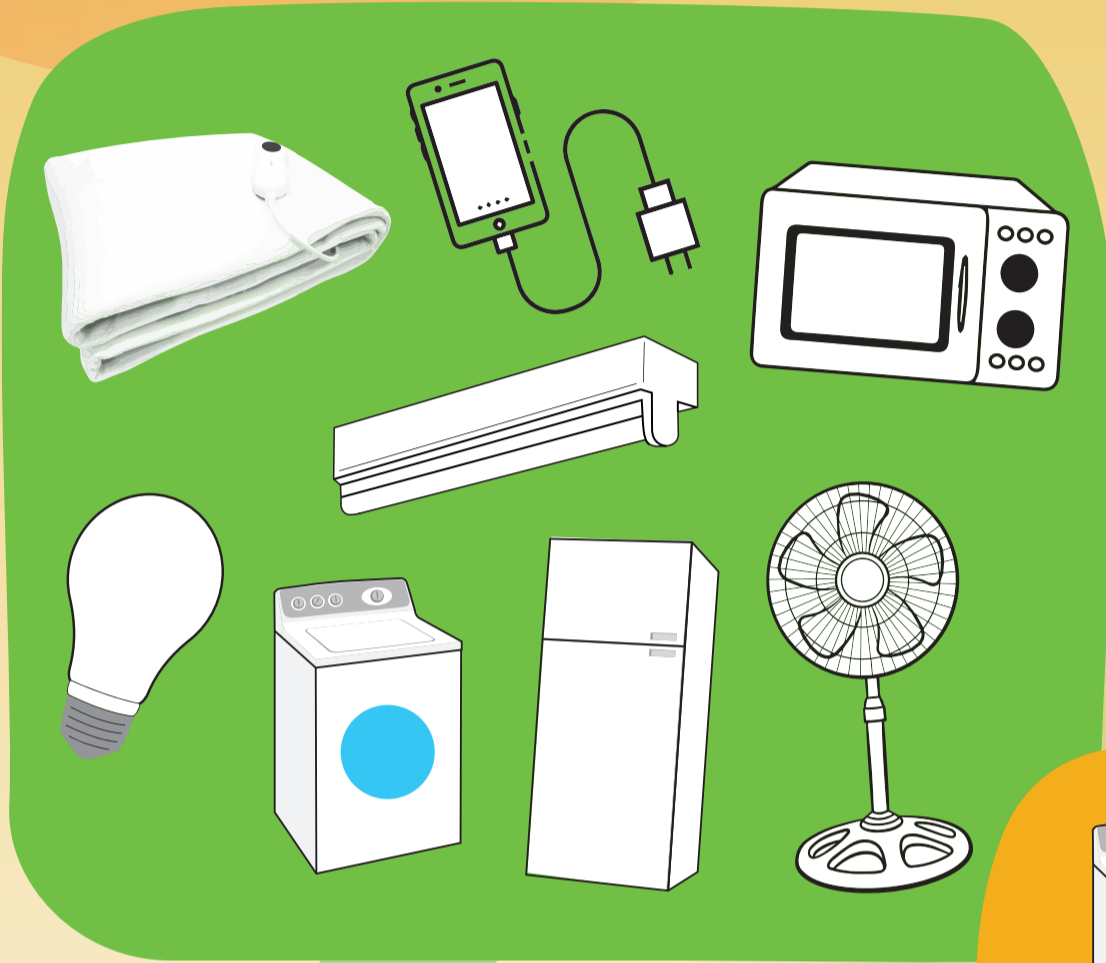


**PAWA**  
ATUNMANKUNYTJAKU



YAALTJITU PUNU NYANGA TJANA PAWA UTJUMILANYI?

# HOW MUCH ELECTRICITY DO THESE APPLIANCES USE?



# HOW TO PAY

TJUUWANGKA PAYAMILALA MANINGKA MUNTA KIIKAATANGKA.  
NYUNTUMPA METER NAMPA PANYA KULINMA ALATJITU.

YOU CAN PAY AT THE STORE WITH CASH OR CARD.  
YOU WILL NEED TO REMEMBER YOUR METER NUMBER.

1



MA-KATIMA TJUWAKU-  
TU NYUNTUMPA METER  
CARD PANYA.

GO TO THE SHOP WITH  
YOUR METER CARD

2



MUNU MANINGKA PAYAMILALA TJUWA  
WARKANGKU NYUNTUMPA METER-NG-  
KA CREDIT TJUNKUNYTJAKU. KA TJUWA  
WARKAPAI NYANGA PALURU NYUN-  
TUMPA CARD-PANGKA SWIPE-AMILALKU.

PAY FOR THE AMOUNT OF CREDIT YOU  
WANT TO ADD TO YOUR METER. THE  
STORE WORKER WILL SWIPE YOUR CARD.

3



MUNU NYUNTUNYA PIPA  
UNGGUKU NAMPA PULKAT-  
JARA, NAMPA 20-TJARA.

YOU WILL BE GIVEN  
A RECEIPT WITH A  
20-DIGIT NUMBER.

4



KA PALULANGURU CREDIT MAPALKU  
PULKARINGANYI NYUNTUMPA  
METER-NGKA.

THE AMOUNT WILL AUTOMATICALLY  
BE TOPPED UP ON YOUR METER.



# SHARING THE COSTS OF ELECTRICITY FAIRLY



**Walingka nyinanytja tjutangku pawa yuutjumilani. Kaya uti uwankarangku yuutjumilantjatjanungku payamilanma.**

**Tjinguru tjana centrepay-nguru payamilanma, Munuya kutjungku, kutjungku tjunama pay-nguru wali nampa wangkara.**

Everyone in the household uses electricity so they all should help to pay for it.

It is not fair for one person to pay for all of the electricity alone. It will be easier if everyone helps to pay for it.

One option is for everyone to have an amount taken from their pay each week to go towards electricity.

SMART METER KATANTANKUNYTJA WIYA

# DO NOT DAMAGE THE SMART METER



**Nyuntumpa smart meter katantankunytja wiya munu aralytjankunytja wiya pawangkunta tjinguru pungkuku.**

**Nyuntumpa meter katantankunyangka pawa wiyaringkuku nyuntumpa waliku. Ka nyuntu tjinguru rawa patalku palyantjaku.**

**Do not damage your smart meter, or try to remove it. You may be electrocuted.**

**Your house will have no electricity until the meter can be fixed. This could take a long time.**

# ELECTRICITY CAN BE DANGEROUS

PAWANGKU  
PUNGKUNYTJAKUTAWARA  
ALATJI PALYANYTJA WIYA

To keep from being  
electrocuted **don't** do  
these things



NGANALANA TJAPILKU?

# WHO DO I CONTACT?

**MoneyMob-ala wangkama nyanganpa kulira nintiringkuntjikitjangku**

**Contact MoneyMob for questions like:**

**Yaaltji-yaaltjingkuna pawa payamilalku?**

- How do I pay for my electricity?

**Nyaana palyalku mani tjukutjukulpi payamilanytjikitjangku?**

- How do I reduce my electricity costs?

**Nyaaringkuna mani wiyangka?**

- What do I do if I can't afford to pay for my electricity?

**Munu kutjupa tjutaku nintiringkuntjikitjangku munu mani tjara kulu wangkantjikitjangku.**

- Or anything relating to education or financial support.



**1800 849 041**

**PAWA@MONEYMOB.ORG.AU**

**MONEYMOB.ORG.AU/PAWA-ATUNMANKUNYTJAKU**

**Cowell Electric-pala wangkama nyanganpa tjapintjikitjangku**

**Contact Cowell Electric for questions like:**

**Ngayuku pawa munu ngayula itingka nyinanytja tjutaku kulu wiyaringu**

- My power, and all of my neighbour's power, has gone out

**Ngayulu pawa payamilanu palu meter-ngka ma-wirkankunytja wiya**

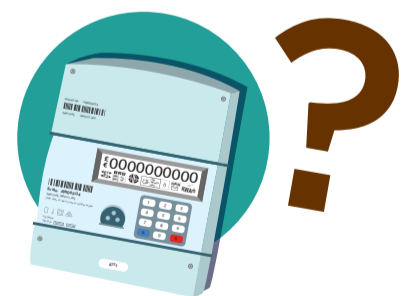
- I made an electricity payment, but it didn't go on my meter

**Nganalana wangkaku ngayuku pawa purkarangu payamilankatintjikitjangku**

- Who do I contact to set up a payment plan?

**Munu kutjupa tjuta pawatjara munu pawa payamilantjatjara**

- Or anything to do with problems with power supply or payment issues.



**1800 805 020**

